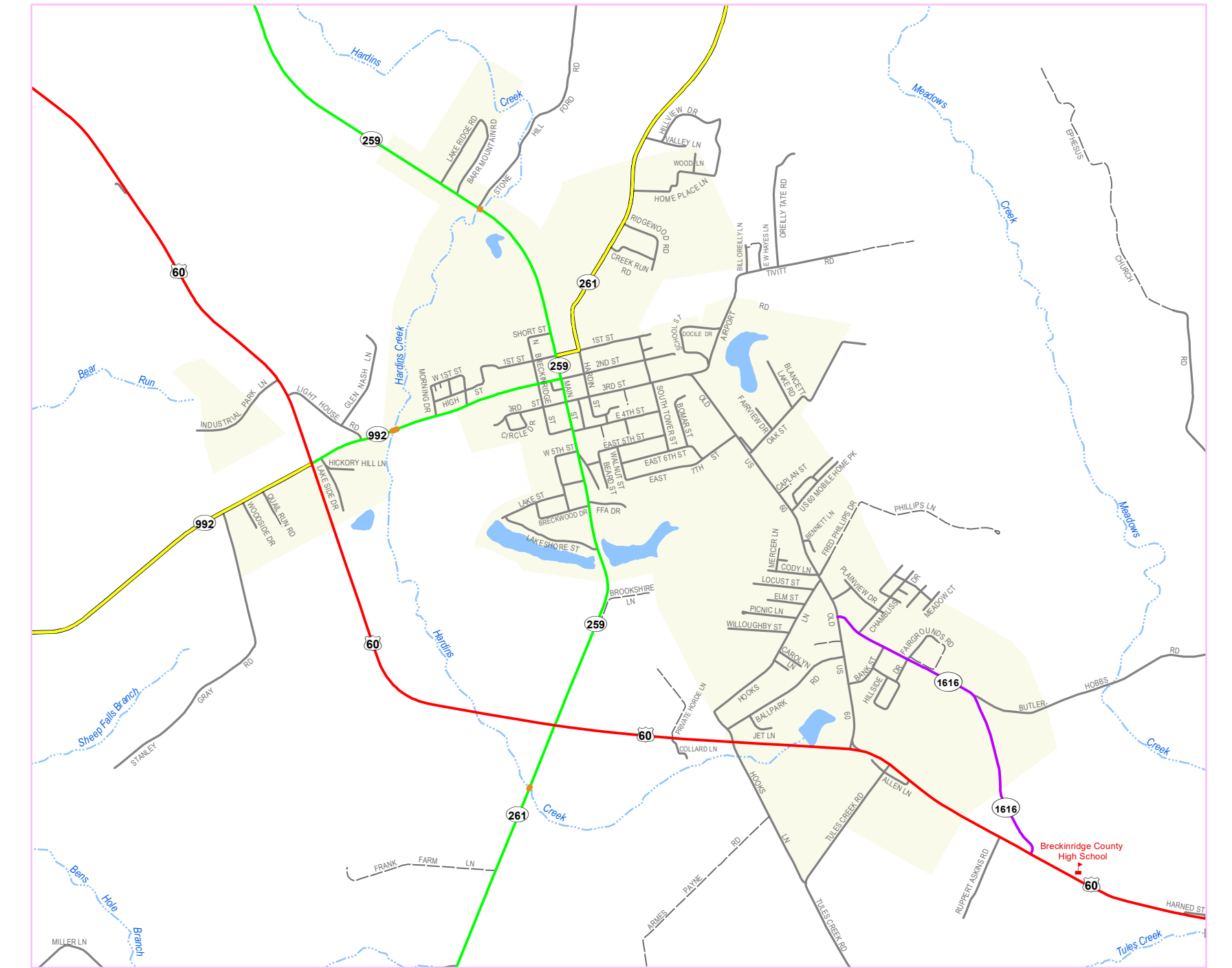
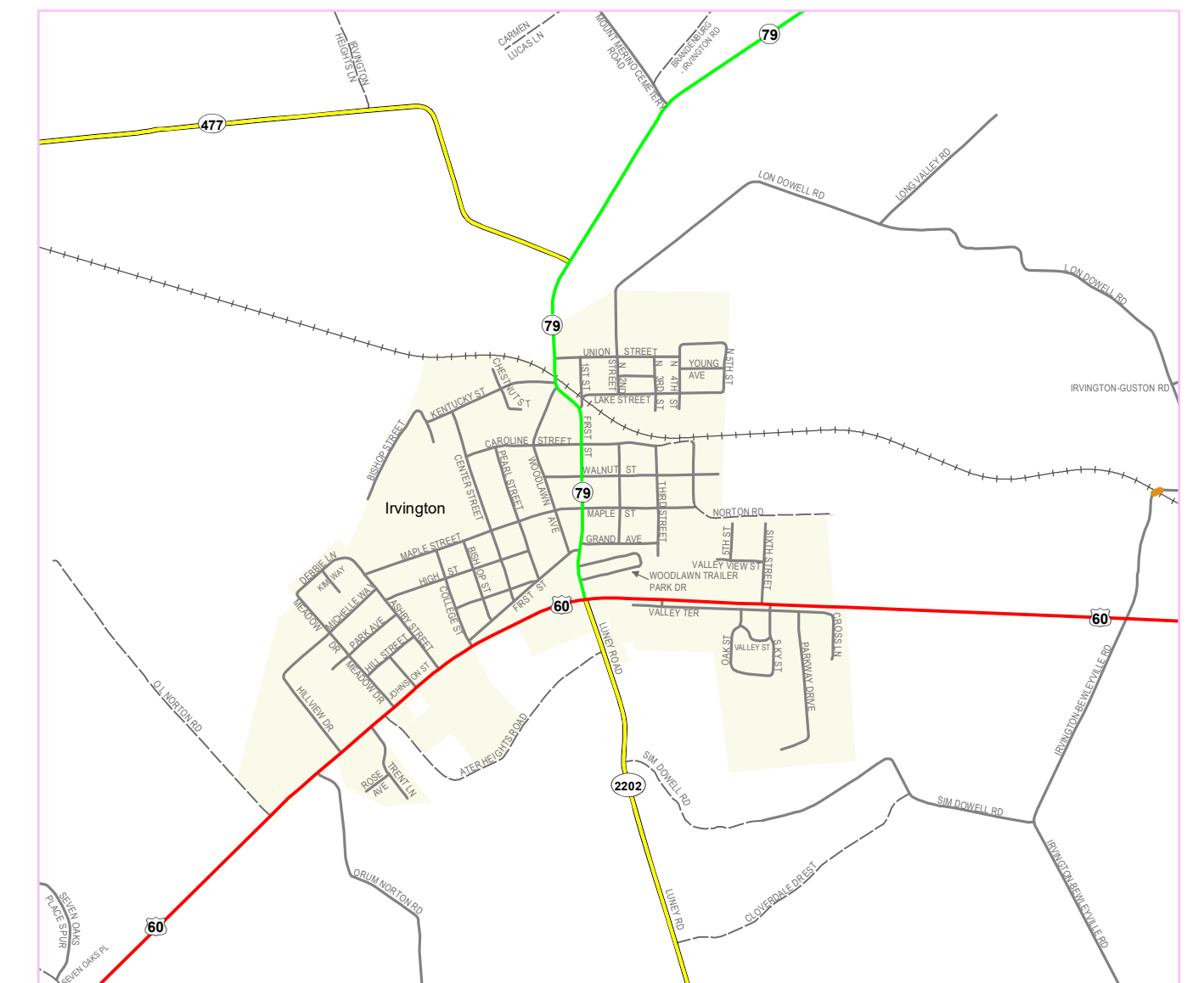
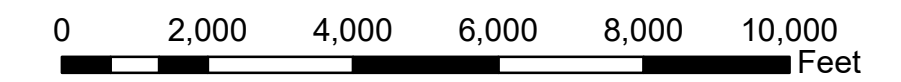


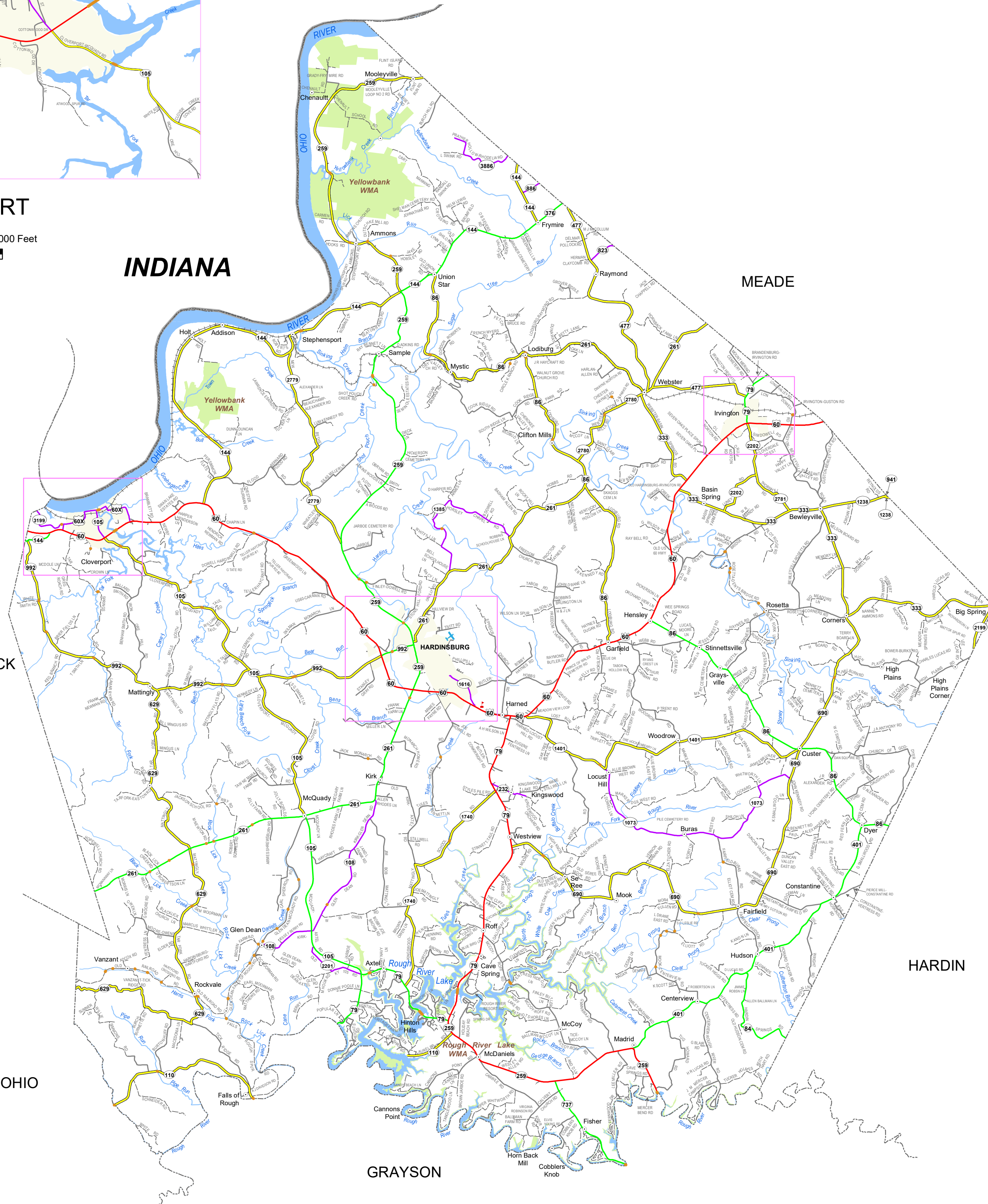
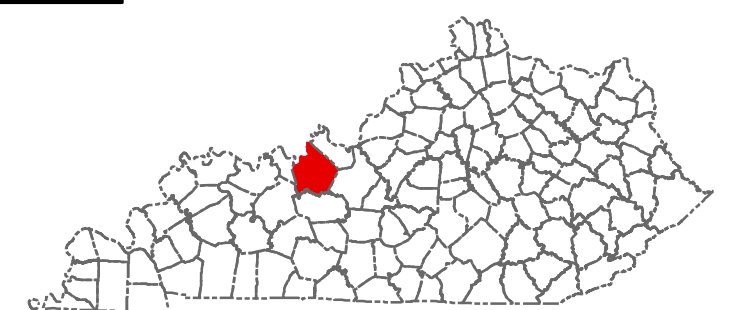
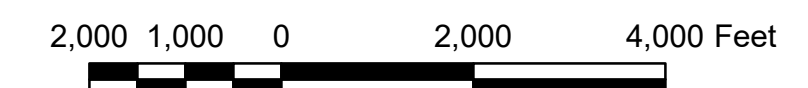
CLOVERPORT



HARDINSBURG



IRVINGTON



- State Primary Road System**
- Interstate
 - Parkway
 - Other State Primary
 - State Secondary
 - Rural Secondary
 - Supplemental Road
 - Unimproved
 - Paved or Concrete
 - Bridge
 - Railroad
 - Stream
 - City/Town
 - ✈ Airport
 - Incorporated Area
 - Lake
 - State Park
 - National Park or Recreation Area
 - Defense Facility
 - Wildlife Area
 - Geological Area
 - State, National, or Private Forest

The Kentucky Transportation Cabinet does not warrant that the information contained on this map is accurate or complete. The Kentucky Transportation Cabinet states that all attempts are made to ensure the correctness of road network portrayal and it is based on the best available information at a given time but disclaims any and all representations and/or warranties made with respect to the map by any contributing source as to its contents, whether expressed, implied, or statutory, including, but not limited to, warranties of title, merchantability, and fitness for a particular purpose. Incorporated area boundaries are based on KRS 81A.010 filings recorded in the Kentucky Secretary of State's Office.

Division of Planning
Kentucky
 UNBRIDLED SPIRIT
State Primary Road System
BRECKINRIDGE COUNTY

2 1 0 2 4 Miles

Last map revision: JUNE 2022
 Road centerlines collected using GPS technology
 Kentucky State Plane Coordinate System (NAD83)
transportation.ky.gov/planning